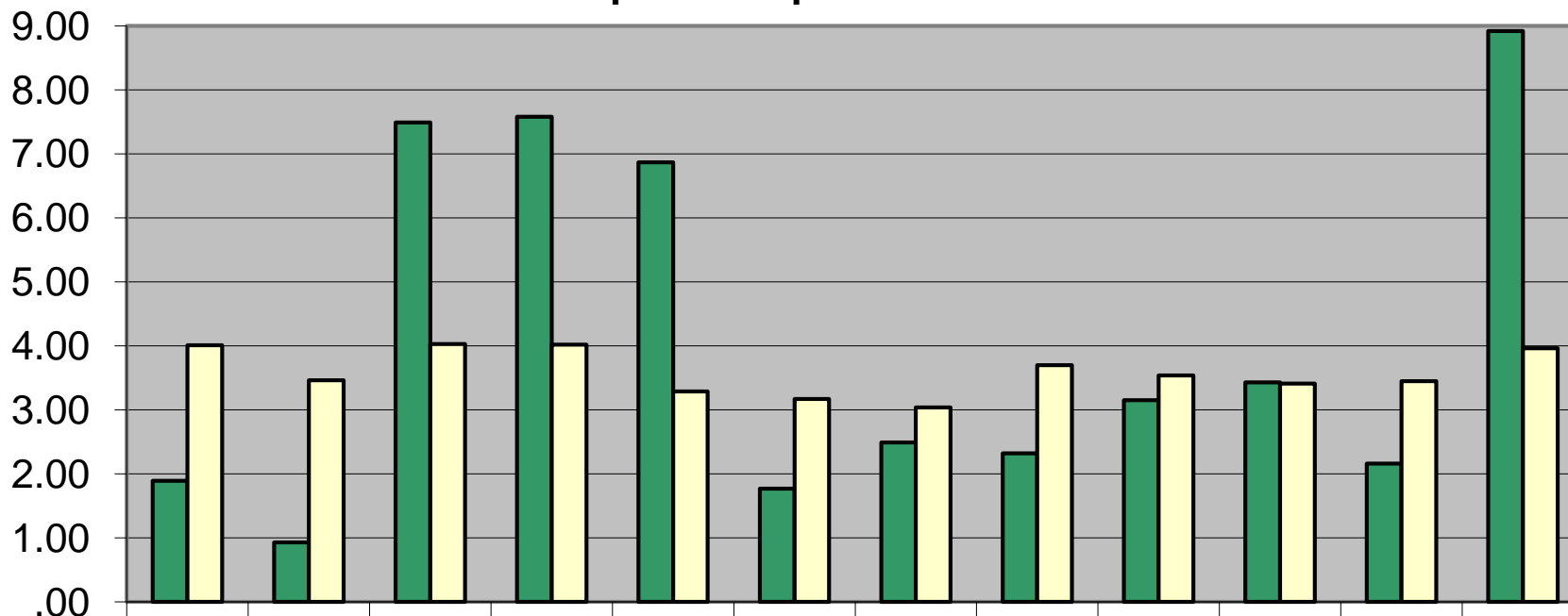


Liquid Precipitation - 1901



	Jan	Feb	Mar	Apr	May	Jun	Jul	Aug	Sep	Oct	Nov	Dec
■ Liq	1.89	.93	7.49	7.58	6.87	1.77	2.49	2.32	3.15	3.43	2.16	8.92
□ Norm	4.01	3.46	4.03	4.02	3.29	3.17	3.04	3.70	3.54	3.41	3.45	3.96