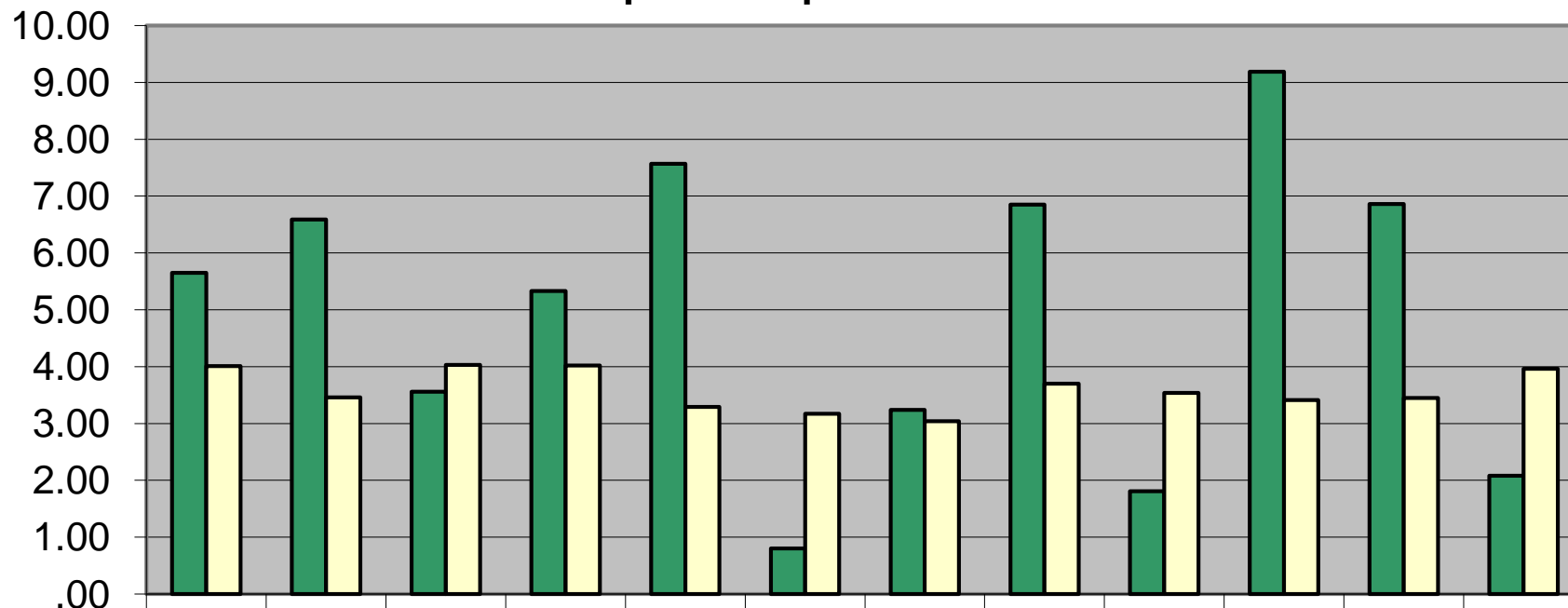


Liquid Precipitation - 1898



	Jan	Feb	Mar	Apr	May	Jun	Jul	Aug	Sep	Oct	Nov	Dec
■ Liq	5.65	6.59	3.56	5.33	7.57	.80	3.24	6.85	1.81	9.19	6.86	2.08
□ Norm	4.01	3.46	4.03	4.02	3.29	3.17	3.04	3.70	3.54	3.41	3.45	3.96